

CYCLONE SERIES

The Cyclone Series contains all of Four Winds Spas' two pump 12 Amp dual speed systems. Each spa comes equipped with water features, LED spa and logo light, drain and WiFi-Ready pack. This series contains some of the most popular and classic models and configurations.

PUMPS: 2 x 12 Amp 5.0 HP Dual Speed (US)
2 x 11.5 Amp 3.0 HP Dual Speed (EU)

PACK: Balboa BP501 or VS501SZ (US)
Balboa GS501SZ (EU)

TOPSIDE CONTROLS: Balboa TP600 6-Button (US only)
Balboa VL600U 6-Button (US & EU)

HEATER: 5.5 kw (US) (3.0 kw EU)

FILTRATION: 1 x 50 sq ft screw-in filter

SHELL: Acrylic

SHELL COLORS:

STERLING
SILVER

WHITE
PEARL

SAHARA

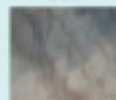
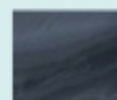
OYSTER
OPAL



MIDNIGHT
CANYON

STORM
CLOUDS

TUSCAN
SUN



COVER OPTIONS: Mahogany/Slate

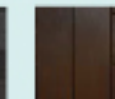
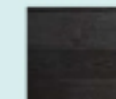
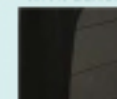
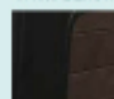
CABINET OPTIONS:

ELITE
ESPRESSO
WITH BLACK

ELITE
GREY
WITH BLACK

ELITE
BLACK

ELITE
ESPRESSO



Certain colors and finishes are only available for certain models. Call for details.

COZUMEL II



DIMENSIONS: 83" x 76" x 39"

SEATING: 6 Persons

JETS: 42 Dual Tone Max Pro Jets

VOLUME: 350 US Gallons / 1,325 L

DRY WEIGHT: 650 lbs / 296 kg

FILLED WEIGHT: 3,565 lbs / 1,620 kg

All Specifications are current at time of publishing but subject to change without notice.

INCLUDED FEATURES:

LED Rainbow Spa Light, Cabinet LED Logo, Green Energy Retention System, 360 Filtration, Spa Cover, Water Features, WiFi Capable (US only)

AVAILABLE EXTRAS:

Steps, Cover Lift, LED Standard Lighting, LED Deluxe Lighting, LED Backlit Jets, Ozonator, Bluecube Mini Amp Audio System, Subwoofer, WiFi Module (US only), Aromatherapy, LED Cupholders, LED Corners on Elite Panels

Spec sheets show a summary of features and options for each spa model. For more details please see a sales associate.

